



AT A GLANCE:

- Rated Capacity — 17,000 pounds
- Vertical Reach — 28' 0"
- Horizontal Reach — 24' 0"
- Continuous Rotation
- 10' 2" Turning Radius with
Optional Four Wheel Steer
- Carry Deck
- Hydraulic Outriggers

BMC BRODERSON
Manufacturing Corp.

P.O. Box 14770, Lenexa, KS 66285-4770
(913) 888-0606 • FAX (913) 541-0690

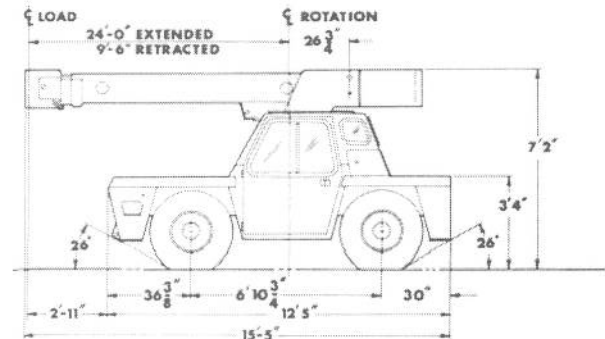
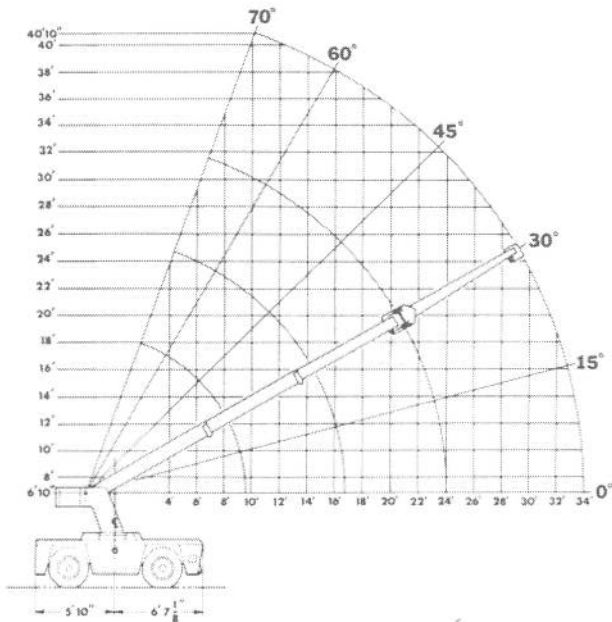
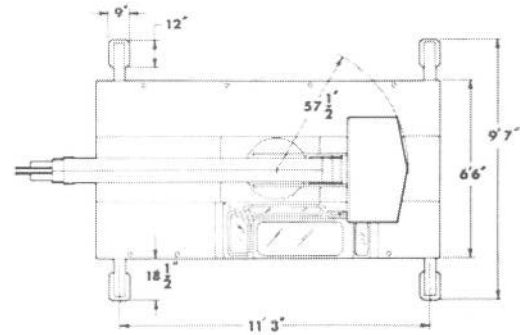
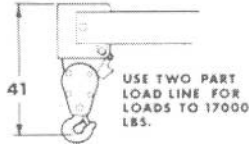
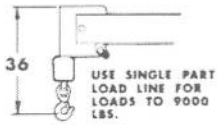
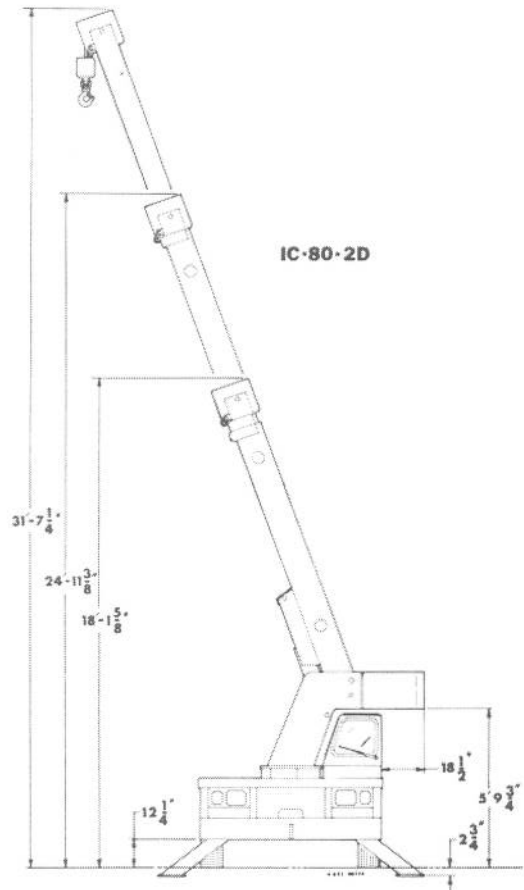
IC-80

IC-80-2D

9'6"-24'0" Boom

LOAD RADIUS FEET	3-SECTION BOOM		10' BOOM EXTENSION INSTALLED	
	ON O.R.*	ON RUBBER	ON O.R.*	ON RUBBER
5	17000	9500	7000	7000
6	14500	8500	6000	6000
8	10250	6000	5000	5000
10	7700	4150	4000	4000
12	6550	3025	3450	3275
14	5550	2350	3050	2600
16	4450	1850	2700	2125
18	3950	1550	2250	1800
20	3250	1300	2250	1525
22	2875	1100	2250	1275
24	2475	925	2250	1050
26			2250	850
28			2000	700
30			1775	600
32			1625	525
34			1400	450

1. Capacities on outriggers are 85% of tipping loads. Capacities on rubber 75% of tipping loads.
2. Deduct 120 lbs. with Boom Extension in stowed position.



General:	Standard Drive Axle	Optional Drive Steer Axle
Weight: IC-80-1D	14,230 lbs.	14,530 lbs.
IC-80-2D	14,530 lbs.	14,830 lbs.
Travel Speeds (Calculated):		
Gear: First	5.4	3.0
Second	11.0	6.5
Third	20.0	12.0
Fourth	N/A	20.0
Gradeability:	43%	71%
Drawbar Pull:		
Gear	Pounds	Pounds
First	7,050*	11,900*
Second	3,450	5,820*
Third	1,880	3,170
Fourth	N/A	1,880
Turning Radius:		
(C/L of Outside Steering Wheel):	14'8"	10'2"
Aisle Width for 90° Turn:	11'9"	9'9"

*Wheels will spin before these values are reached.

Engine:	Standard	Optional	Optional	Optional
Make	Continental	John Deere	Perkins	Cummins
Model	TM27	4.239	D4.203	4B3.9
No. of Cyl.	4	4	4	4
Displacement	165 C.I.D.	239 C.I.D.	203 C.I.D.	239 C.I.D.
HP at Governed Speed	64	80	63	76

Electrical:

2 Volt System

Lighting Package:

One Pair Headlights with Hi and Low Beams, Back-up Lights, Integral Tail, Brake and Turn Signals and Front turn Signals

Instrument Package:

Fuel, Ammeter, Oil Pressure, Water Temperature, Converter Oil Temperature Gauges and Hourmeter

Back-Up Alarm

Provides pulsating sound when transmission is in reverse.

Transmission:

Make: Borg Warner

Model: 72T/T18

Type: Reversing Gearbox and Manual Shift Three Speed Gearbox.*

Equipped with Torque Converter and Transmission Oil Cooler.

Gear Ratio:	Forward	Reverse
First	6.324:1	6.956:1
Second	3.092:1	3.401:1
Third	1.686:1	1.855:1
Fourth*	1:1	1:1

Torque Converter Has Stall Ratio of 2.15:1

*4-speed gearbox only available with 4-wheel steer option

Axles:	Standard	Optional
Drive Axle:		
Make	Rockwell	Hurth
Model	F-146	272A
Gear Ratio	7.2:1	11.98:1
Location	Front	Front
Steering Axle (Non-Driving):		
Make	Rockwell	
Model	FF-931	
Location	Rear	

Brakes:

Service - 4-Wheel Drum Type Brakes

Parking - Band Type Mounted on Transmission

Tires:

Standard - 9:00x15, 12-Ply Rating, Highway Tread

Optional - 10:00x15, 12-Ply Rating, Highway Tread

Optional - 10:00x15, 14-Ply Rating, Mining & Industrial Tread

Optional - Grizzley Supersoft XS250x15 Solid Rubber

Optional - Foam Filling for the Above Pneumatic Tires

Fuel Tank:

20 Gallon Capacity

Outriggers:

Four Hydraulic Outriggers of Box Beam Construction with Direct-Connected Holding Valves. Independent Controls for Left and Right-Hand Outriggers. Outrigger Pad Dimension 9"x12".

Cargo Deck:

62 Square Feet

12,000 pounds Capacity

Steps Located on Front Corners

Hydraulic System:

Tandem Pump, Direct-Driven by Engine Crankshaft, Rated at 16 and 32.5 GPM at Rated RPM. Hydraulic Oil Tank Capacity of 16 Gallons.

Steering:

Standard:

Full Hydraulic Orbitrol Unit with Two Double-Acting Hydraulic Cylinders Attached to Rear Axle.

Optional:

Full Hydraulic Orbitrol Unit with Two Double-Acting Hydraulic Cylinders Attached to Both Front and Rear Axles.

Steering Modes Include: Rear Wheel Steer; Round Steer

Crane:

Boom Movement:	IC-80-1D	IC-80-2D
Rotation	Continuous	Continuous
Elevation	0° to 70°	0° to 70°
Extension	8'2" to 20'2" (12')	9'6" to 24'

Boom Speeds:

Rotation	1.7 RPM	1.7 RPM
Elevation	10.0 Seconds	10.0 Seconds
Extension	28.0 Seconds	34.0 Seconds

Boom Assembly:

Three-Section Boom Assembly Equipped with Bearing Pads, Double-Acting Hydraulic Cylinders with Direct-Connected Holding Valves and Boom Angle Indicator on Each Side of Boom.

Boom Rotation:

Heavy-Duty Ball Bearing Rotation Gear with External Teeth. Rotation is Powered by Hydraulic Motor and Worm Gear Drive.

Boom Winch:

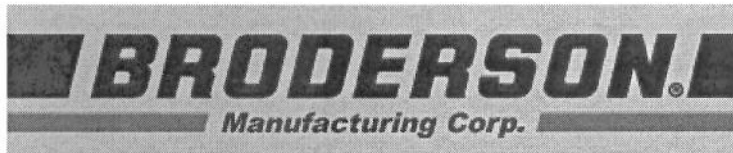
Turret-Mounted
Hydraulic Powered
Bare Drum Line Pull of 10,000 Pounds
Winch Line Speed of 110 FPM
IC-80-1D—90 feet of 9/16" Wire Rope
IC-80-2D—105 feet of 9/16" Wire Rope
Downhaul Weight and Swivel Hook

Anti-Two Block Device:

Prevents damage to hoist rope and/or crane components from pulling load hook against tip.

2-Part-Line Sheave Block:

Single sheave block for two-part-line requirements.



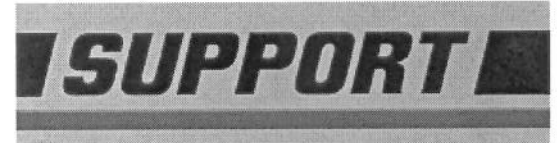
[Home](#) [IC-20](#) [IC-25](#) [IC-35](#) [IC-40](#) [IC-80](#) [IC-200](#) [IC-250](#) [RT-300](#) [Quality](#) [Support](#) [Contacts](#)

Crane Weights & Axle Loads

BASE WEIGHT INCLUDES 4-WHEEL STEER IF AVAILABLE.

TYPICAL WT INCLUDES OPERATOR, RIGID BOOM EXT'N, DIESEL, CAB (EXC. IC-20 & 35), 4WD ON IC-200D-G & 250

MODEL	TOTAL BASE WEIGHT (LBS)	FRONT BASE WEIGHT (LBS)	REAR BASE WEIGHT (LBS)	TOTAL TYPICAL WEIGHT (LBS)	FRONT TYPICAL WEIGHT (LBS)	REAR TYPICAL WEIGHT (LBS)	WHEEL- BASE (INCHES)	TRACK WIDTH (INCHES)	TIRE FOOT- PRINT (SQ. IN.)
IC-20-1A	5800	1720	4080	6192	1753	4439	54.00	40.00	46
IC-20-1B	5800	1720	4080	6192	1753	4439	54.00	40.00	46
IC-20-1C	5800	1720	4080	6227	1768	4459	54.00	40.00	46
IC-20-1D	5860	1880	3980	6287	1928	4359	54.00	40.00	46
IC-20-1E	6000	1880	4120	6427	1928	4499	54.00	40.00	46
IC-20-1F	6010	1880	4130	6437	1928	4509	54.00	40.00	46
IC-20-1G	6180	2200	3980	6517	2158	4359	54.00	40.00	46
IC-25-2A	5850	2200	3650	6147	2208	3939	70.00	40.00	46
IC-35-2A	7100	3240	3860	7560	3435	4125	72.00	52.00	46
IC-35-2B	7200	3240	3960	7660	3435	4225	72.00	52.00	46
IC-35-2C	7400	3500	3900	7860	3695	4165	72.00	52.00	46
IC-35-2D	7660	3620	4040	8120	3815	4305	72.00	52.00	46
IC-40-2A	8840	4160	4680	9210	4355	4855	78.50	55.00	40
IC-80-1A	13700	5600	8100	14535	6041	8494	78.50	66.00	64
IC-80-1B	13700	5600	8100	14535	6041	8494	78.50	66.00	64
IC-80-1C	14200	6100	8100	15065	6546	8519	82.75	66.00	64
IC-80-1D	14500	6230	8270	15510	6676	8834	82.75	66.00	64
IC-80-1E	14800	6400	8400	15715	6846	8869	82.75	66.00	72
IC-80-1F	15730	7052	8678	16605	7498	9107	84.75	66.00	72
IC-80-1G	16050	6950	9100	16925	7396	9529	86.00	66.00	72
IC80-1G 4x4	16650	7350	9300	17525	7796	9729	86.00	66.00	72
IC-80-2D	14800	6550	8250	15810	7052	8758	82.75	66.00	72
IC-80-2E	15000	6700	8300	15915	7202	8713	82.75	66.00	72
IC-80-2F	15930	7402	8528	16805	7904	8901	84.75	66.00	72
IC-80-2G	16250	7300	8950	17125	7802	9323	86.00	66.00	72
IC80-2G 4x4	16850	7700	9150	17725	8202	9523	86.00	66.00	72
IC-80-3E	15370	7300	8070	16285	7886	8399	82.75	66.00	72
IC-80-3F	16230	8050	8180	17105	8636	8469	84.75	66.00	72
IC-80-3G	16650	8000	8650	17525	8586	8939	86.00	66.00	72
IC80-3F 4x4	16930	8135	8795	17805	8721	9084	84.75	66.00	72
IC80-3G 4x4	17250	8400	8850	18125	8986	9139	86.00	66.00	72
IC-200-1A	25910	11660	14250	27010	12654	14356	92.00	81.00	134
IC-200-1B	25910	11660	14250	27010	12654	14356	92.00	81.00	134
IC-200-1C	27200	11880	15320	28295	12899	15396	96.00	81.00	134
IC-200-1E	27300	11930	15370	28395	12949	15446	97.00	81.00	134
IC-200-1F	27300	12000	15300	28455	13034	15421	97.00	81.00	134



[Home](#) [IC-20](#) [IC-25](#) [IC-35](#) [IC-40](#) [IC-80](#) [IC-200](#) [IC-250](#) [RT-300](#) [Quality](#) [Support](#) [Contacts](#)

Outrigger Load Tables

MAXIMUM OUTRIGGER LOADS						
CRANE MODEL	TYPICAL CRANE WEIGHT (POUNDS)	MAXIMUM CONDITION LOAD (POUNDS)	MAXIMUM CONDITION RADIUS (FEET)	MAXIMUM OUTRIGGER PAD LOAD (POUNDS)	PAD SIZE (INCHES)	GROUND PRESSURE (PSI)
IC-20-1B, 1C,1D	6300	5000	4	6620	6 x 6.5	170
IC-20-1E,1F	6400	5000	4	7250	6 x 6.5	186
IC-35-2	7700	8000	4	7620	6 x 8	159
IC-40-2	8800	2850	12	7500	6 x 8	156
IC-80-1	16900	17000	5	15030	9 x 12	139
IC-80-2	17100	17000	5	15120	9 x 12	140
IC-80-3	17500	17000	5	15270	9 x 12	141
IC-200-1	28400	20000	10	25790	11 x 16	147
IC-200-2	28900	19800	10	25900	11 x 16	147
IC-200-3	31300	30000	6	26150	11 x 16	149
IC-250-3 OUT & DOWN	38600	13500	20	31020	9 x 9	383
IC-250-3 IN & DOWN	38600	25050	8	31370	9 x 9	387
RT-200-3	30900	30000	6	27780	12 x 16	145
RT-300-2	45300	25950	14	40440	16 x 17	149

OUTRIGGER LOAD EXAMPLES AT 10 FOOT LOAD RADIUS				
CRANE MODEL	RATED 360° LOAD @10 FT LOAD RADIUS (POUNDS)	OUTRIGGER LOAD @RATED LOAD @10 FT RADIUS (POUNDS)	OUTRIGGER LOAD @1/2 RATED LOAD @10 FT RADIUS (POUNDS)	OUTRIGGER LOAD W/EMPTY HOOK @10 FT RADIUS (POUNDS)
IC-20-1B, 1C,1D	1500	4150	3630	3130
IC-20-1E,1F	2000	5290	4540	3830
IC-35-2	3200	7000	4490	2340

IC-40-2	3400	7480	5030	2810
IC-80-1	7700	12700	8170	4370
IC-80-2	7700	12840	8310	4480
IC-80-3	7700	13120	8570	4600
IC-200-1	20000	25790	15500	7810
IC-200-2	19800	25900	15710	7750
IC-200-3	18500	25080	15630	7890
IC-250-3 OUT & DOWN	25000	29550	18420	10980
IC-250-3 IN & DOWN	20300	31320	18840	11650
RT-200-3	18500	25950	16610	9090
RT-300-2	30000	35300	21730	13760

OUTRIGGER LOAD EXAMPLES, MAX RADIUS ON MAIN BOOM

CRANE MODEL	RATED 360° LOAD @ MAX LOAD RADIUS (POUNDS)	OUTRIGGER LOAD @RATED LOAD @MAX RADIUS (POUNDS)	OUTRIGGER LOAD W/EMPTY HOOK @MAX RADIUS (POUNDS)
IC-20-1B, 1C,1D	750# @ 15'	3630	3130
IC-20-1E,1F	1000# @ 15'	4540	3830
IC-35-2	1150# @ 19'	5450	2590
IC-40-2	1450# @ 19'	6570	3050
IC-80-1	3550# @ 20'	11710	4610
IC-80-2	2550# @ 24'	11000	5050
IC-80-3	1950# @30'	11720	5990
IC-200-1	5500# @ 28'	21260	8040
IC-200-2	3400# @ 36'	20120	9950
IC-200-3	1850# @ 50'	21670	14010
IC-250-3 OUT & DOWN	3550# @ 50'	27320	14950
IC-250-3 IN & DOWN	900# @ 50'	22840	19540
RT-200-3	2000# @ 49'	21110	13520
RT-300-2	2300# @ 60'	29780	21060

OUTRIGGER LOAD EXAMPLES, MAX RADIUS ON BOOM EXTENSION			
CRANE MODEL	RATED 360° LOAD @ MAX LOAD RADIUS (POUNDS)	OUTRIGGER LOAD @RATED LOAD @MAX RADIUS (POUNDS)	OUTRIGGER LOAD W/EMPTY HOOK @MAX RADIUS (POUNDS)
IC-20-1B, 1C,1D	350# @ 22'	3420	3200
IC-20-1E,1F	225# @ 22'	3980	3850
IC-35-2	650# @ 27'	5240	2980
IC-40-2	750# @ 27'	5710	3200
IC-80-1	2000# @ 30'	11150	5320
IC-80-2	1500# @ 34'	10770	5880
IC-80-3	1150# @ 40'	11510	7040
IC-200-1	2900# @ 43'	19780	9340
IC-200-2	2200# @ 51'	21020	11470
IC-200-3	980# @ 66'	21820	16420
IC-250-3 OUT & DOWN	1800# @ 70'	26200	17380
IC-250-3 IN & DOWN	900# @ 50'	20070	16330
RT-200-3	800# @ 64'	19290	15570
RT-300-2	1100# @ 80'	30860	24930

NOTE: All weights and measurements are in US pounds, feet and inches.

BRODERSON
Manufacturing Corp.

14741 W 106th St
Lenexa, KS 66215

Dimensions and views shown are
for reference purposes only.
Specifications subject to change.

© 2008-09, Broderson Manufacturing Corp.

bmc

Office: 913.888.0606
Fax: 913.541.0690